



## **COMPLETE EQUIPMENT & SPARE PARTS FOR PPOWER PLANTS**

**IAS Trade Zone (Pvt) Ltd** is established to serve the industrial sector of Pakistan not only supplying Spare parts from China / European countries but also complete equipment / Plants of various capacities from our world renowned Chinese/European Principals.

Our network consisting of highly reputable manufacturers and suppliers around the globe enable us to provide the best quality products, latest technology and support to our clients.

### **Business & Vision**



Our goal is to be recognized as “The best solution providers”. IAS Trade Zone is a technology and service driven company which sets high standards for quality and competence.

IAS Trade Zone is a Trade Zone with spirit to provide best solutions to the power plants with the supply of spares, new equipment from the world renowned suppliers.

We desire to serve the Industrial Sector of Pakistan with supply of Complete Plants, Mechanical Equipment, Electrical Equipment, Spare Parts; Training, Consultancy, Maintenance and Other Services.

## Electrical

- Motors
- Circuit Breakers
- Solenoid Valves
- Automation parts
- Modules
- Cables
- Carbon Brush
- Starters
- Panels
- Fuses
- Relays
- ABB, AEG & SIEMENS parts

**ABB**



**SIEMENS**



## Instrumentation

- Thermocouples
- Transducers
- PLC
- Complete range of all instruments



## Automation

- Touch Screen
- Switches
- Kiln Camera
- Lynx Camera
- Spyrometer
- Flow meters
- Socket





**Steam Turbine**



**Cooling Tower**



**Transformers**



**Generators**



## Coal Pulverizer

- Gear Box
- Rollers
- Roller Tires
- Table
- Separators



## Economizer

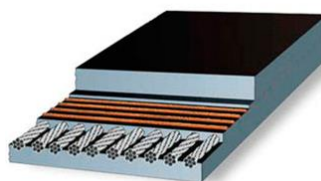


## Forced Draft Fan



## Coal Belt Conveyor

- Conveyor Belt
- Idler Rollers
- Motorized Pulleys





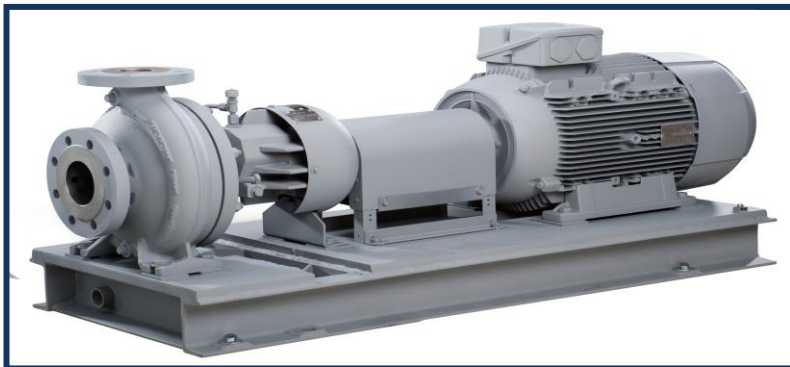
## Pipe and Fittings:

- Pipes (ERW, Seamless & SAW) Fittings
- Casing & Tubing (Seamless & Welded)
- Valves
- Steam traps
- Strainers
- Pig Launchers & Receivers
- Scraper Stations



## Rotating Machinery:

- Gas Booster Compressors
- Air Compressors
- Centrifugal Pumps
- Agitators
- Mixers
- Process Pumps

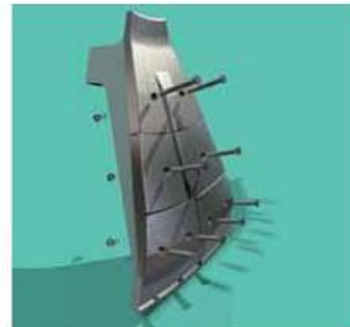
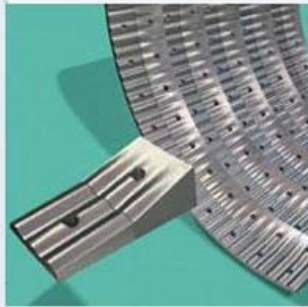
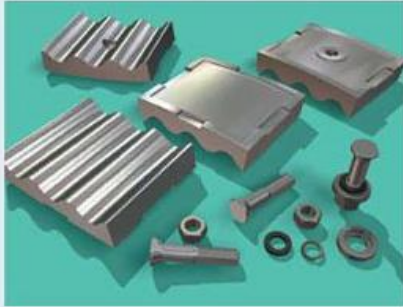


## Pumps & Compressors



## Special Castings

- Heat Resistant Material
- Wear Resistant Material



## Mechanical Parts

- Gearboxes
- Geared Motors
- Filters
- Valves
- SEALS
- Heat Resistant Material
- Blowers
- Compressors
- Actuators
- Pumps
- Oil Coolers
- Bearings
- Couplings
- Pneumatic parts
- Hose



**FLENDER**

**Gearbox / Geared Motors**



**Couplings**

**Filters**

**Valves**





## OUR MANUFACTURER FACILITY (PIPE)



**PIPE PRODUCTION LINE**



**PIPE-EXPANDING MACHINE**



**PIPE-EXPANDING MACHINE**



**PIPE HOT-EXPANDING LINE**

## FITTINGS



**ASTM A234 WPB, ASTM A420  
WPL6 Elbow**



**A860 WPHY 60 BEND FBE  
COATING**



**ASTM A234 WPB R=5D Bends  
24"**



**CONTAINER LOADING**

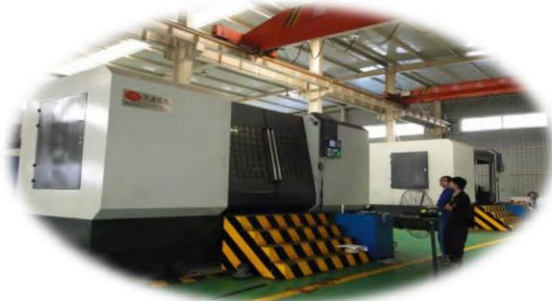
## OUR MANUFACTURER FACILITY (VALVE)



**VALVE FACTORY**



**VALVE FACTORY WORKSHOP**



**CNC EQUIPMENT**



**MACHINING WORKSHOP**

## GEAR BOX

our Principals are specialized in manufacturing Gearboxes, Couplings, Dampers, Friction plates, Lubrication Equipment's, whole set of speed – up gearboxes for Steam turbine, reducers and spare parts serving all the industries specially Power Plants, cement, sugar & steel.

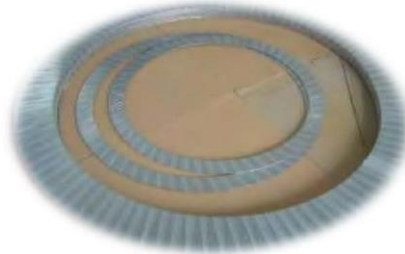




## GASKETS



**SPIRAL WOUND GASKET**



**FLAT GASKET**



**SPIRAL WOUND GASKET**



**SPIRAL WOUND GASKET**



**GASKET WITH HOLE**



**GASKET PACKAGE**

## BOLTS & NUTS



**PTFE COATING BOLTS  
/HEX. NUTS**



**ASTM A193  
B7M Bolts**



**SS316 Bolts with 2Nuts  
/Washers**



**ASTM A194 2HM  
HEX. NUT**



**STAINLESS STEEL BOLTS/  
2HEX. NUTS**



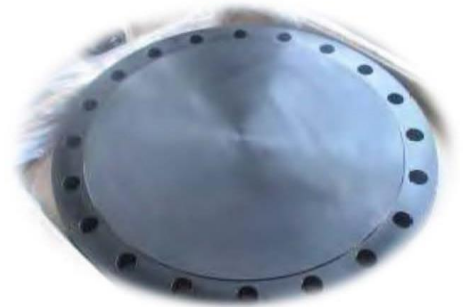
**ASTM A193  
B7 Bolts**



**FLANGES**  
 100% Forged



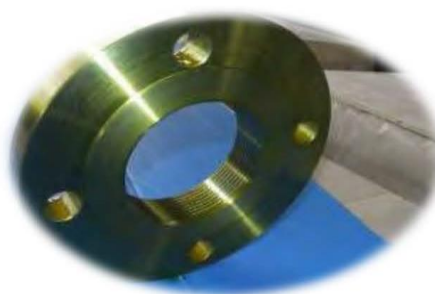
**Blind Flange**



**Welding Neck Flange**



**Slip-on Flange**



**NPT Threaded Flange**



**Spectacle Blind Flange**

**PUMPS**

- CENTRIFUGAL PUMP
- RECIRPOCATING PUMP
- END SUCTION PUMP
- VERTICAL MULTISTAGE PUMPS
- HORIZONTAL MULTISTAGE PUMPS
- SUBMERSIBLE PUMPS
- ELECTRICAL AND PNEUMATIC PUMPS





**VALVES**

- Ball Valve
- Globe Valve
- Butterfly Valve
- Gate Valve
- Needle Valve
- Safety Relief Valve



**PIPES**

- SMLS Pipe
- SS Pipe
- ERW Pipe
- LSAW Pipe
- SSAW Pipe
- DI Pipe





## Refractory for Furnaces and Boiler House

